



**ALEXANDER R. SHARKEY**

Portfolio

# TABLE OF CONTENTS

## DeSales University

- [A Christmas Carol](#).....Slide 5
- [As You Like It](#).....Slide 12
- [Skeleton Crew](#).....Slide 13
- [Tartuffe](#).....Slide 22
- [Working: A Musical](#) .....Slide 25
- [Pippin](#).....Slide 28
- [The Cherry Orchard](#).....Slide 35

# TABLE OF CONTENTS

## Pennsylvania Shakespeare Festival

- *Crazy For You*.....Slide 39
- *The Mystery of Irma Vep – A Penny Dreadful*.....Slide 45
- *Antony and Cleopatra*.....Slide 50
- *Private Lives*.....Slide 55
- *The Adventures of Robin Hood and Maid Marian*.....Slide 61
- *Willpower Tour 2019: Macbeth*.....Slide 67

# TABLE OF CONTENTS

## A Collection of Miscellaneous Artwork

- [Sailboats on Mendota](#).....Slide 72
- [House](#).....Slide 73
- [Drapes](#).....Slide 74
- [Stone](#).....Slide 75
- [River Rocks](#).....Slide 76
- [Wood Grain](#).....Slide 77
- [Marble](#).....Slide 78

# ***A CHRISTMAS CAROL***

Director: Dennis Razze

Scenic Design: Will Neuert

Lighting Design: Eric T. Haugen

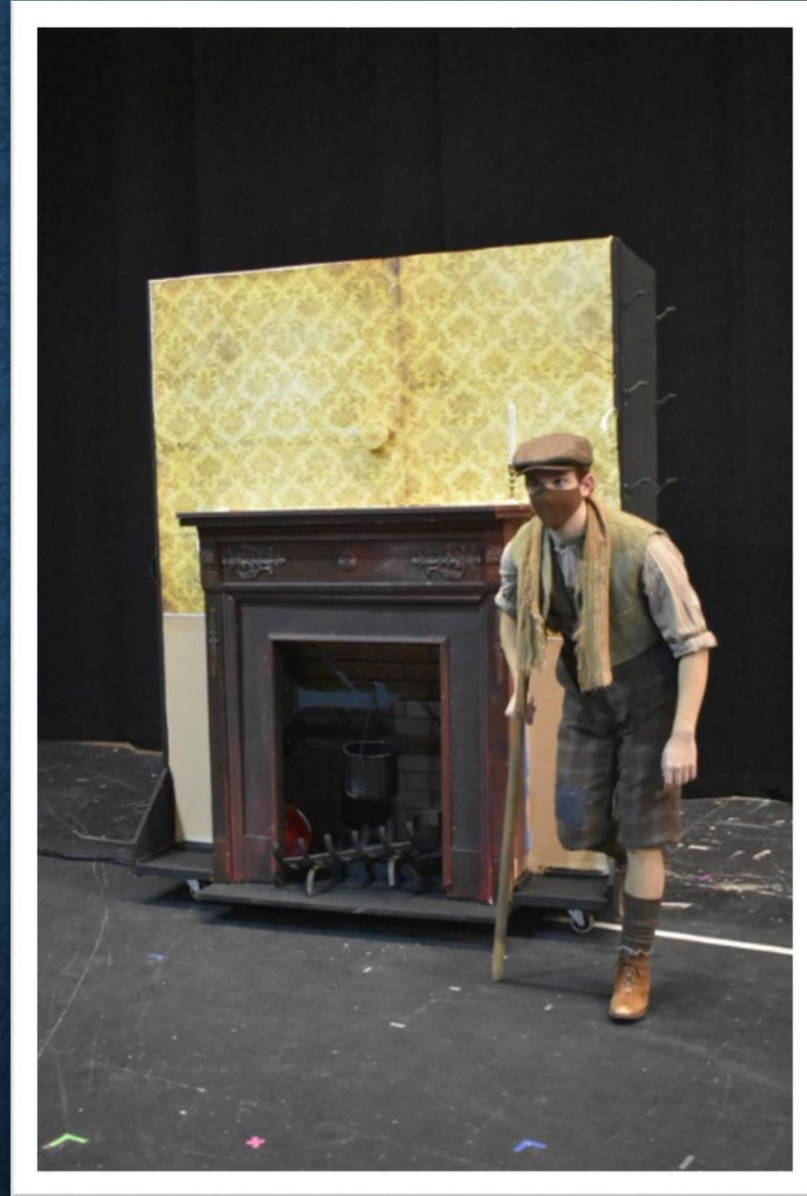
Costume Design: Bailey Rose Gavin

Sound Designer: Ian Carr

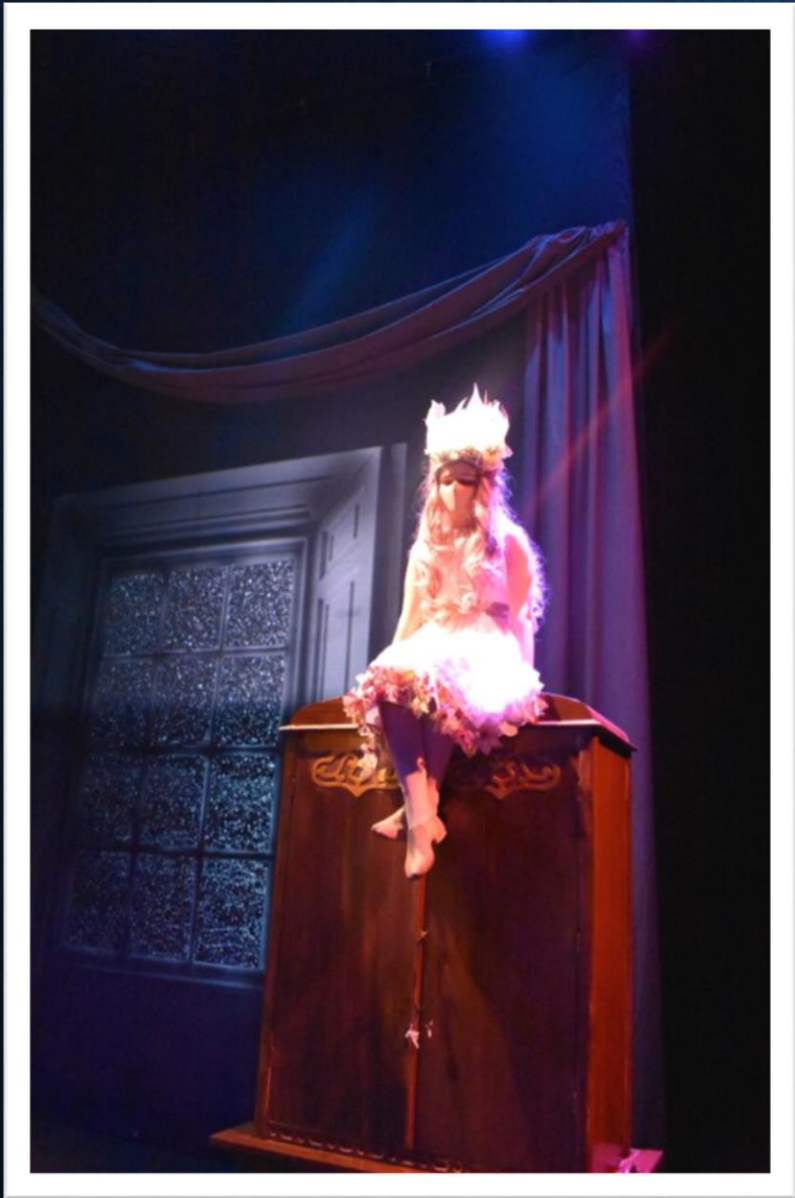


SHARKEY CC 2020













***AS YOU LIKE  
IT***

Director: Matt Pfeiffer

Scenic Design: Will Neuert

Lighting Design: Eric T. Haugen

Costume Design: Erin Demczyszyn

Sound Designer: William Neal

# ***SKELETON CREW***

Director: Kalif Troy

Scenic Design: Alexander R. Sharkey

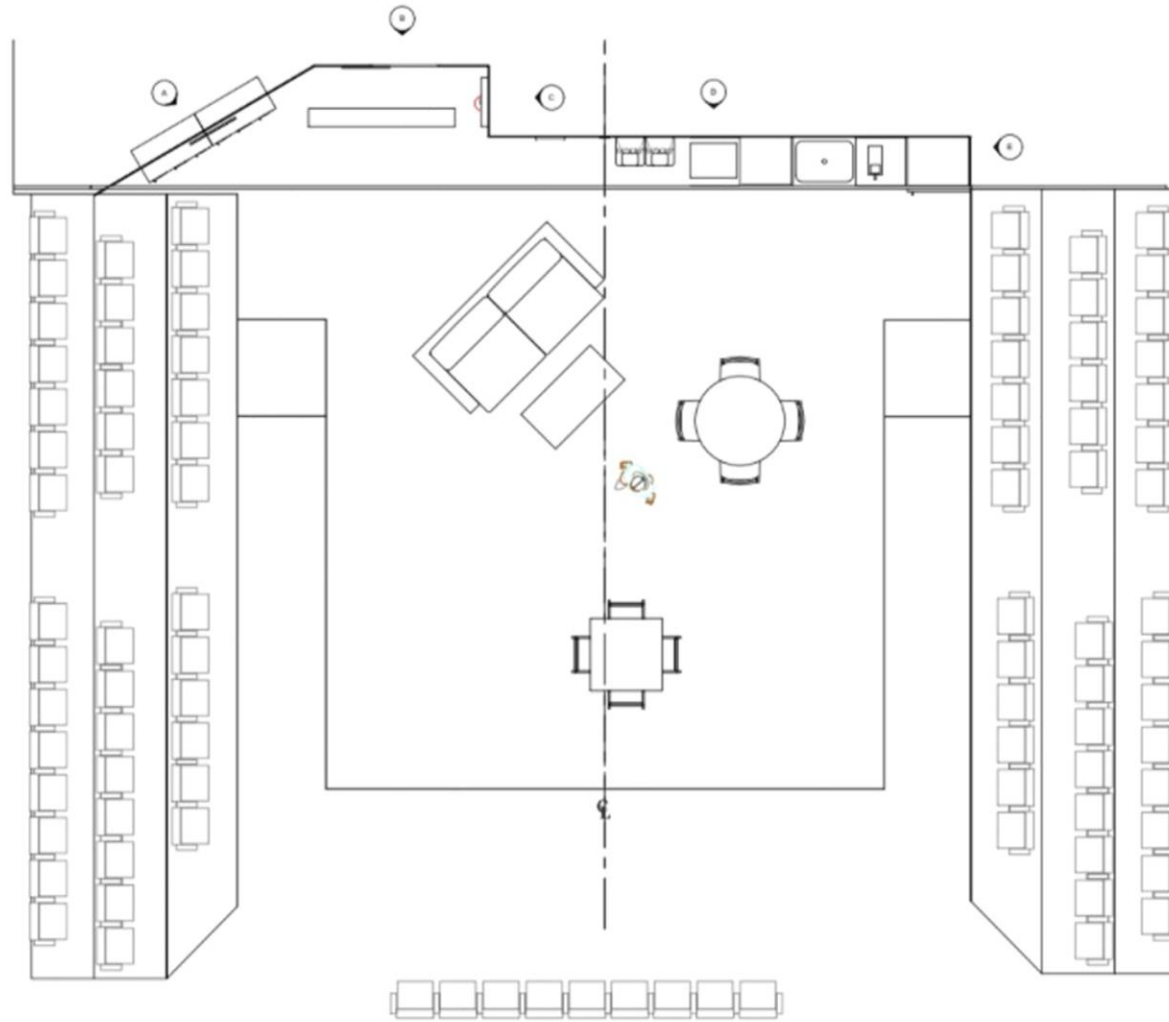
Lighting Design: RJ Craig

Costume Design: Erin Demczyszyn


Sound Designer: Sarah Fox

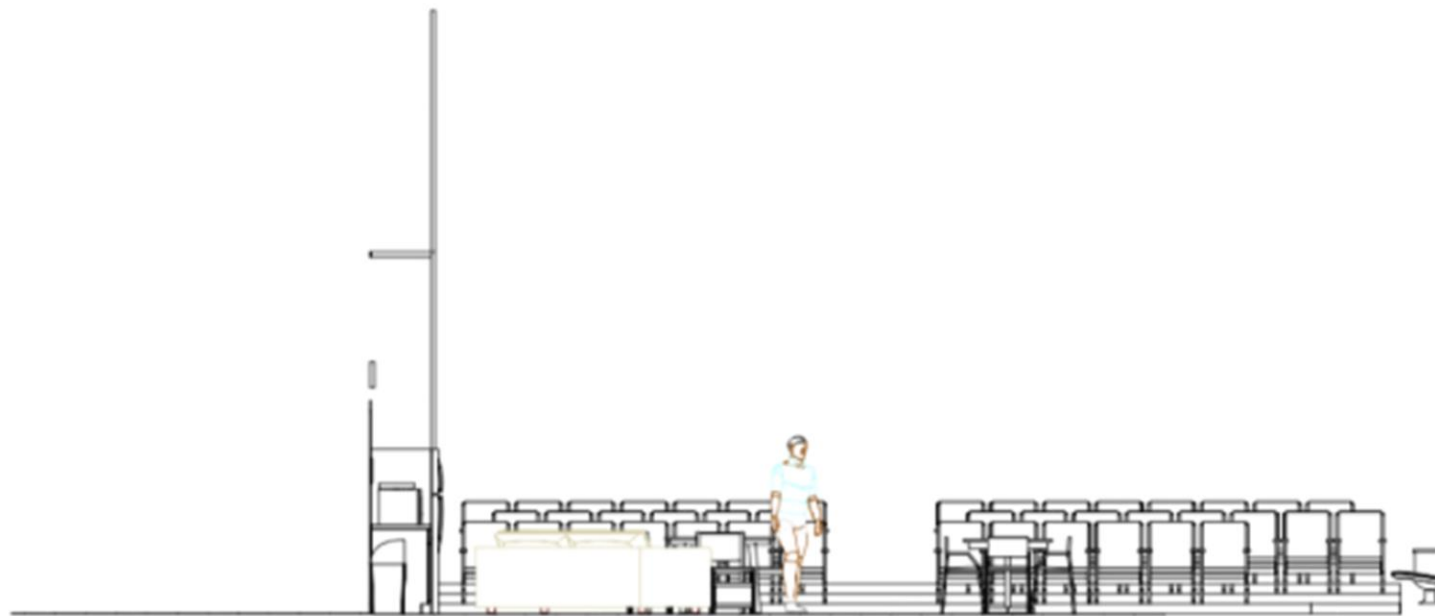
\*Cancelled due to COVID-19 after the design process was completed

Vectorworks Educational Version



Vectorworks Educational Version

REVISION #	
REVISION DATE	
REVISION NOTES	
SHEET TITLE	GROUNDPLAN
SHOW TITLE	SKELETON CREW
PRODUCER	DESALES UNIVERSITY
EVENT LOCATION	SCHUBERT THEATRE
DIRECTED BY	KALIF TROY
DRAWN BY	ALEXANDER SHARKEY
DESIGNER	ALEXANDER SHARKEY
SCALE	1/2"=1'-0"
DATE	4/27/2020
	
SHEET #	1
	OF
	13



1 STAGE LEFT SECTION  
Scale: 1/2" = 1'-0"

SHEET TITLE  
STAGE LEFT SECTION

SHOW TITLE  
*SKELETON CREW*

PRODUCER  
DESALES UNIVERSITY

EVENT LOCATION  
SCHUBERT THEATRE

DIRECTED BY  
KALIF TROY

DRAWN BY  
ALEXANDER SHARKEY

DESIGNER  
ALEXANDER SHARKEY

SCALE  
1/2" = 1'-0"

DATE  
4/27/2020

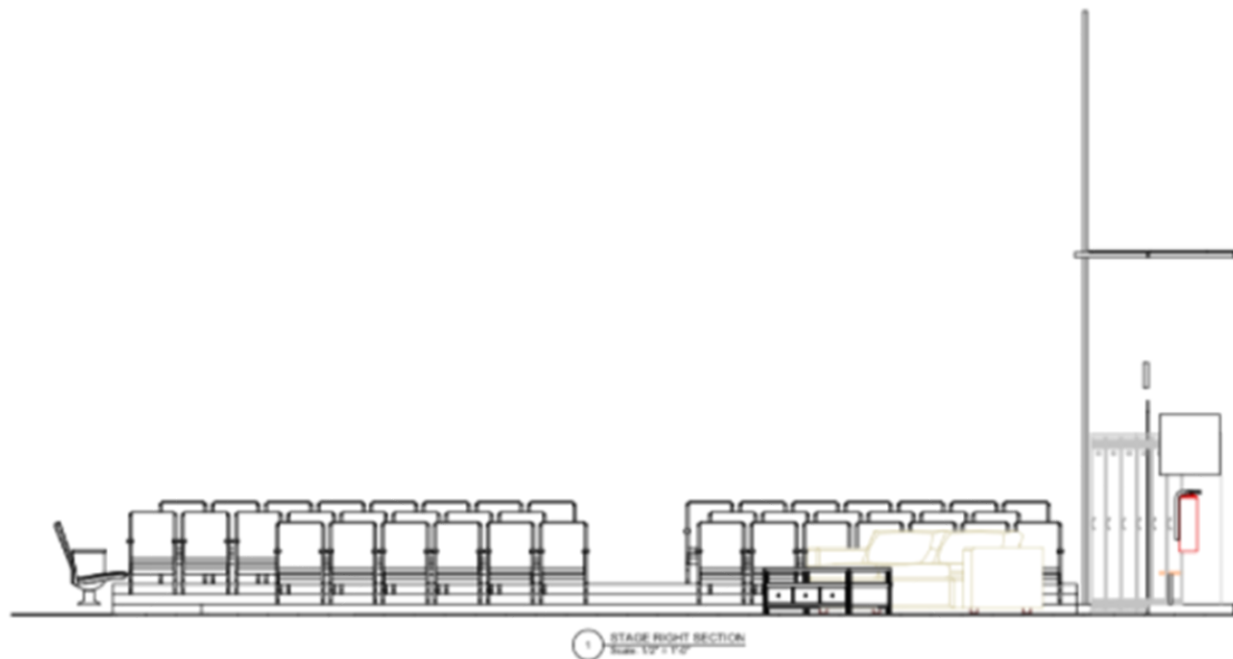


SHEET #

2

OF

13



1 STAGE RIGHT SECTION  
Scale: 1/2"=1'-0"

SHEET TITLE  
STAGE RIGHT  
SECTION

SHOW TITLE  
SKELETON CREW

PRODUCER  
DESALES UNIVERSITY

EVENT LOCATION  
SCHUBERT THEATRE

DIRECTED BY  
KALIF TROY

DRAWN BY  
ALEXANDER SHARKEY

DESIGNER  
ALEXANDER SHARKEY

SCALE  
1/2"=1'-0"

DATE  
4/27/2020



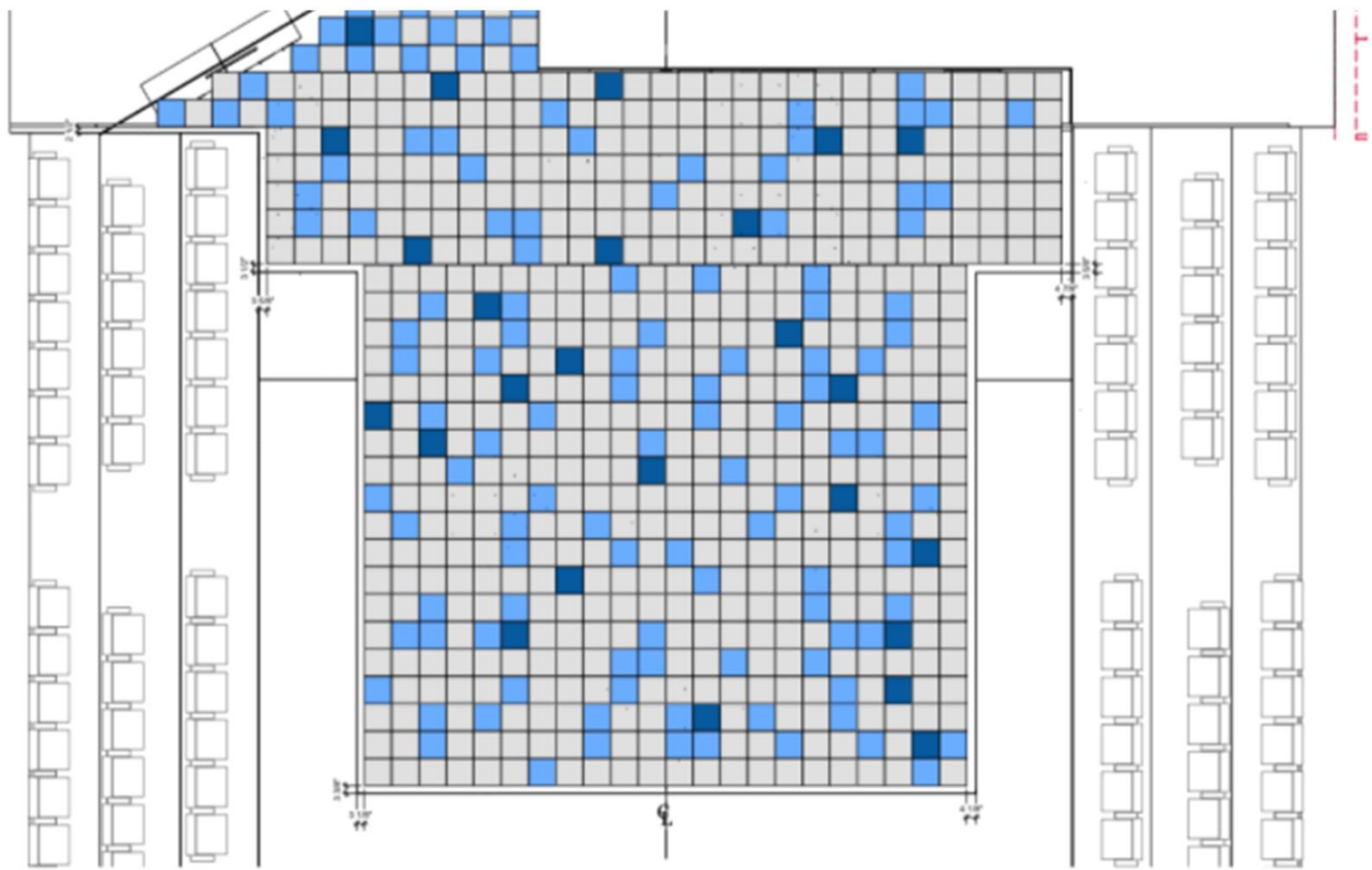
SHEET #

3

OF

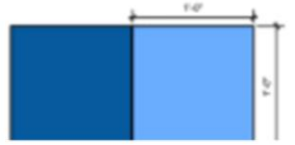
13





1/2" = 1'-0"  
 1/2" = 1'-0"  
 1/2" = 1'-0"

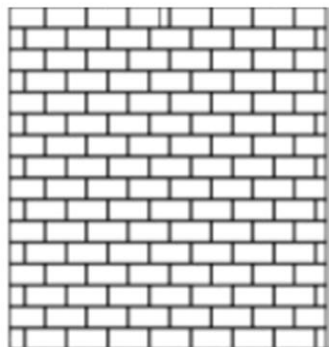
1  
 1/2" = 1'-0"



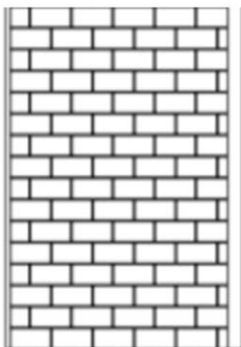
REVISION NOTES
SHEET TITLE TILES
SHOW TITLE SKELETON CREW
PRODUCER DESALES UNIVERSITY
EVENT LOCATION SCHUBERT THEATRE
DIRECTED BY KALIF TROY
DRAWN BY ALEXANDER SHARKEY
DESIGNER ALEXANDER SHARKEY
SCALE 1/2" = 1'-0"
DATE 4/27/2020
SHEET # 4



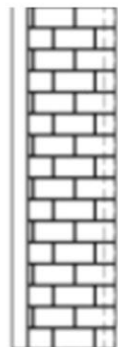
SHEET #  
4



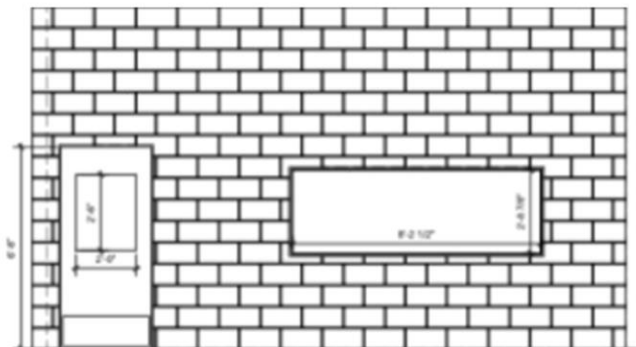
1 WALL A  
12'-0" H x 10'-0" W



2 WALL B  
12'-0" H x 10'-0" W



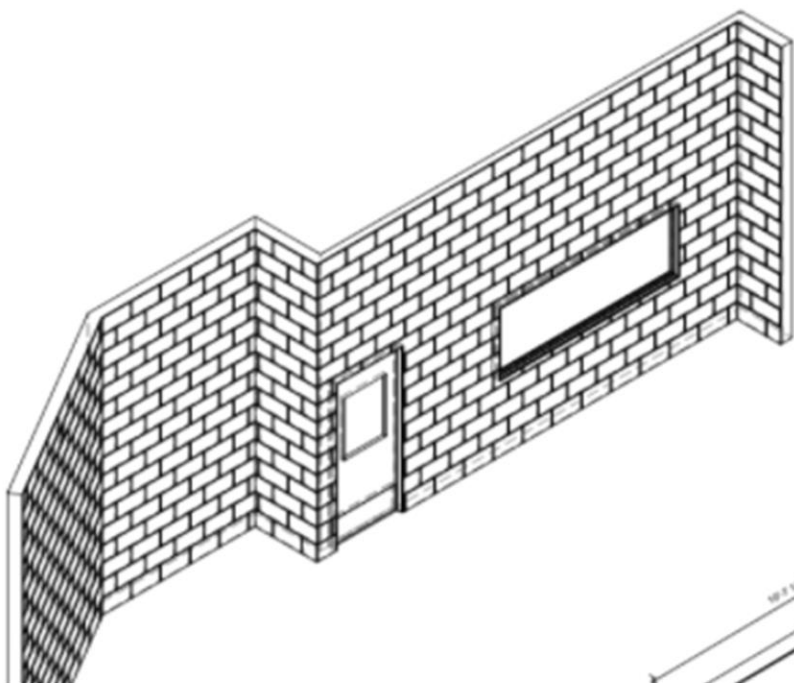
3 WALL C  
12'-0" H x 10'-0" W



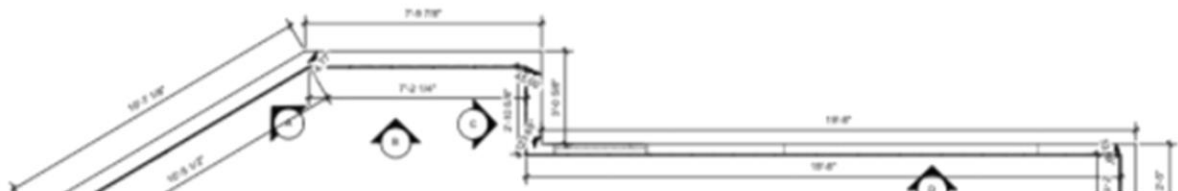
4 WALL D  
12'-0" H x 19'-0" W



5 WALL E  
12'-0" H x 10'-0" W



**NOTES:**  
ALL WALLS ARE 12' TALL.  
EACH CINDER BLOCK IS 8"X16".



REVISION NOTES

SHEET TITLE  
 FRONT ELEVATIONS

SHOW TITLE  
 SKELETON CREW

PRODUCER  
 DESALES UNIVERSITY

EVENT LOCATION  
 SCHUBERT THEATRE

DIRECTED BY  
 KALIF TROY

DRAWN BY  
 ALEXANDER SHARKEY

DESIGNER  
 ALEXANDER SHARKEY

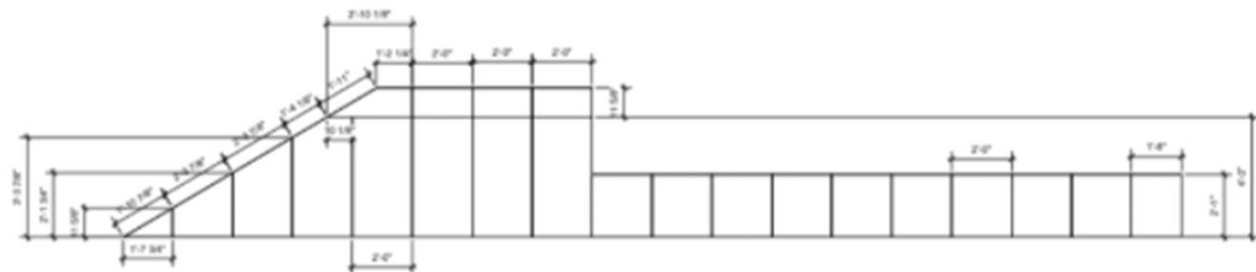
SCALE  
 1/2"=1'-0"

DATE  
 4/27/2020



SHEET #

5



**NOTES:**  
1" BORDER CENTERED ON THE SEAMS IN BETWEEN EACH TILE.

SHEET TITLE	CEILING
SHOW TITLE	SKELETON CREW
PRODUCER	DESALES UNIVERSITY
EVENT LOCATION	SCHUBERT THEATRE
DIRECTED BY	KALIF TROY
DRAWN BY	ALEXANDER SHARKEY
DESIGNER	ALEXANDER SHARKEY

SCALE  
 1/2" = 1'-0"

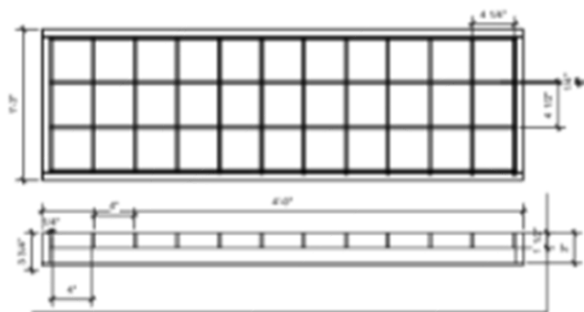
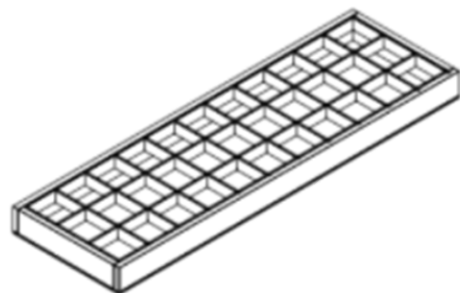
DATE  
 4/27/2020



SHEET #

6

OF



SHEET TITLE  
LIGHTS

SHOW TITLE  
*SKELETON CREW*

PRODUCER  
DESALES UNIVERSITY

EVENT LOCATION  
SCHUBERT THEATRE

DIRECTED BY  
KALIF TROY

DRAWN BY  
ALEXANDER SHARKEY

DESIGNER  
ALEXANDER SHARKEY

SCALE  
1/2"=1'-0"

DATE  
4/27/2020

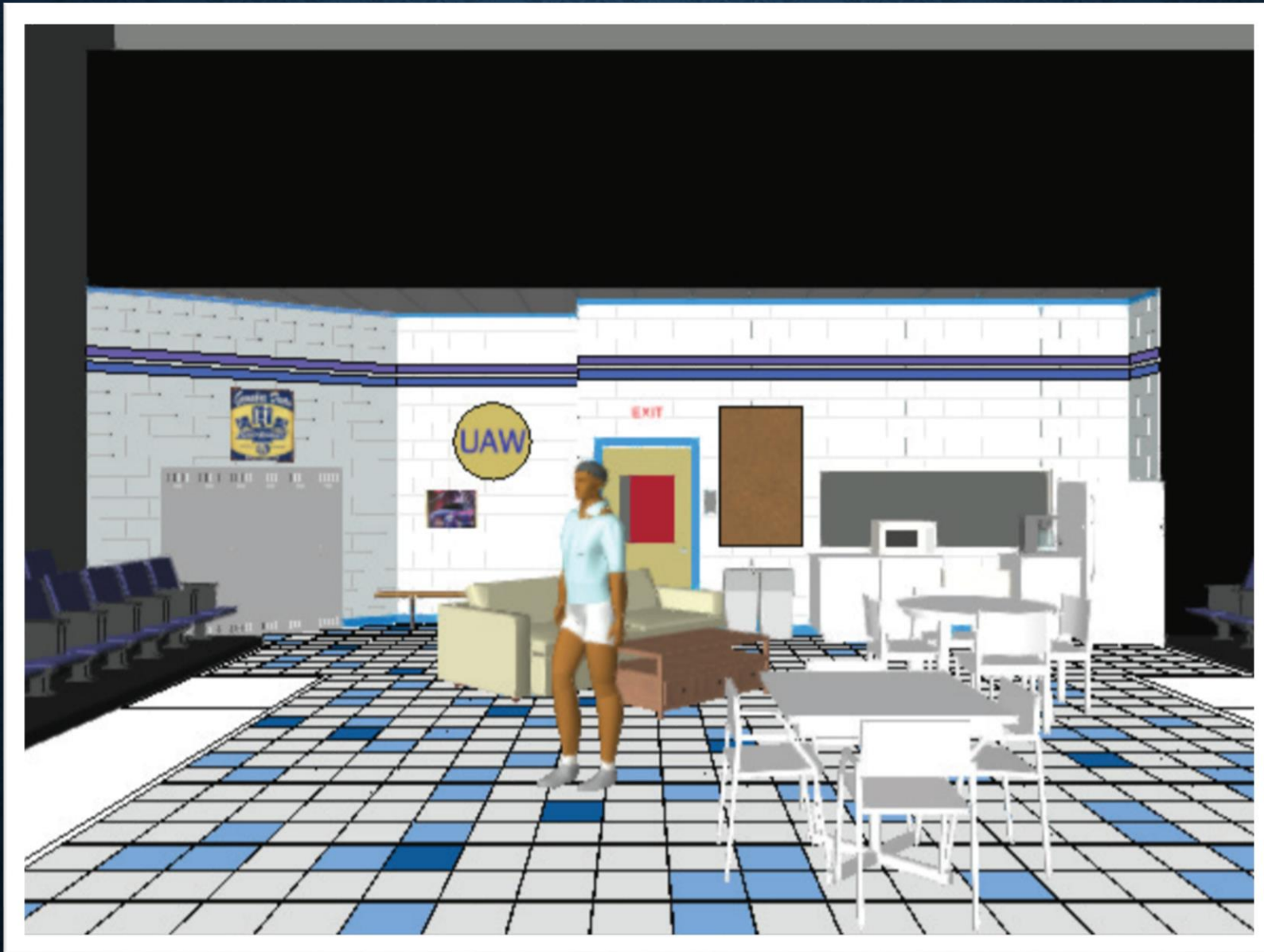


SHEET #

7

OF

13



# ***TARTUFFE***

Director: Wayne Turney

Scenic Design: Will Neuert

Lighting Design: Eric T. Haugen

Costume Design: Amy Best

Sound Designer: William Neal







***WORKING: A  
MUSICAL***

Director: Anne Lewis

Scenic Design: Bridget Broskey

Lighting Design: Nicholas Culmone

Costume Design: Bailey Rose Gavin

Sound Designer: William Neal





# ***PIPPIN***

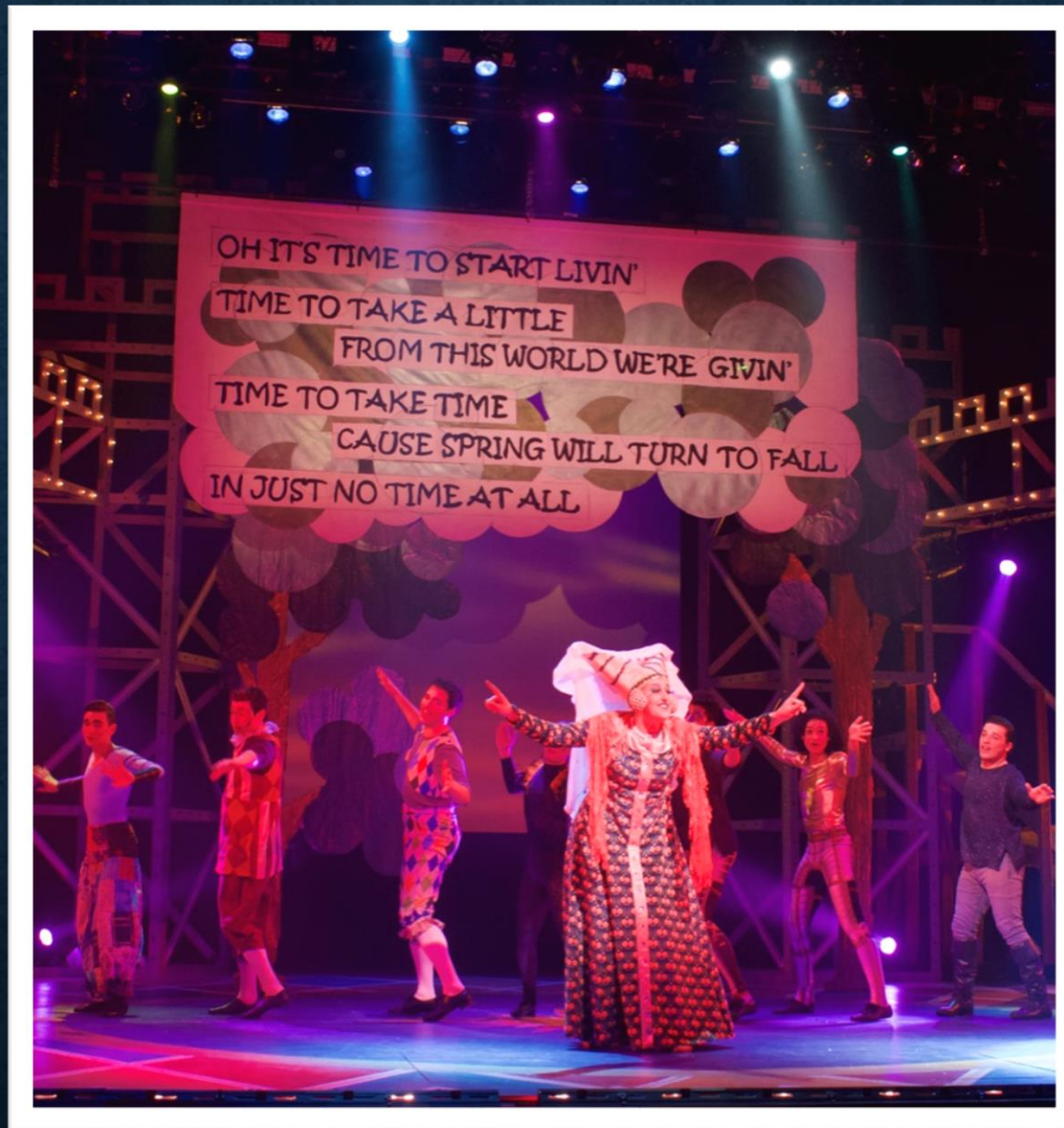
Director: Dennis Razze

Scenic Design: Will Neuert

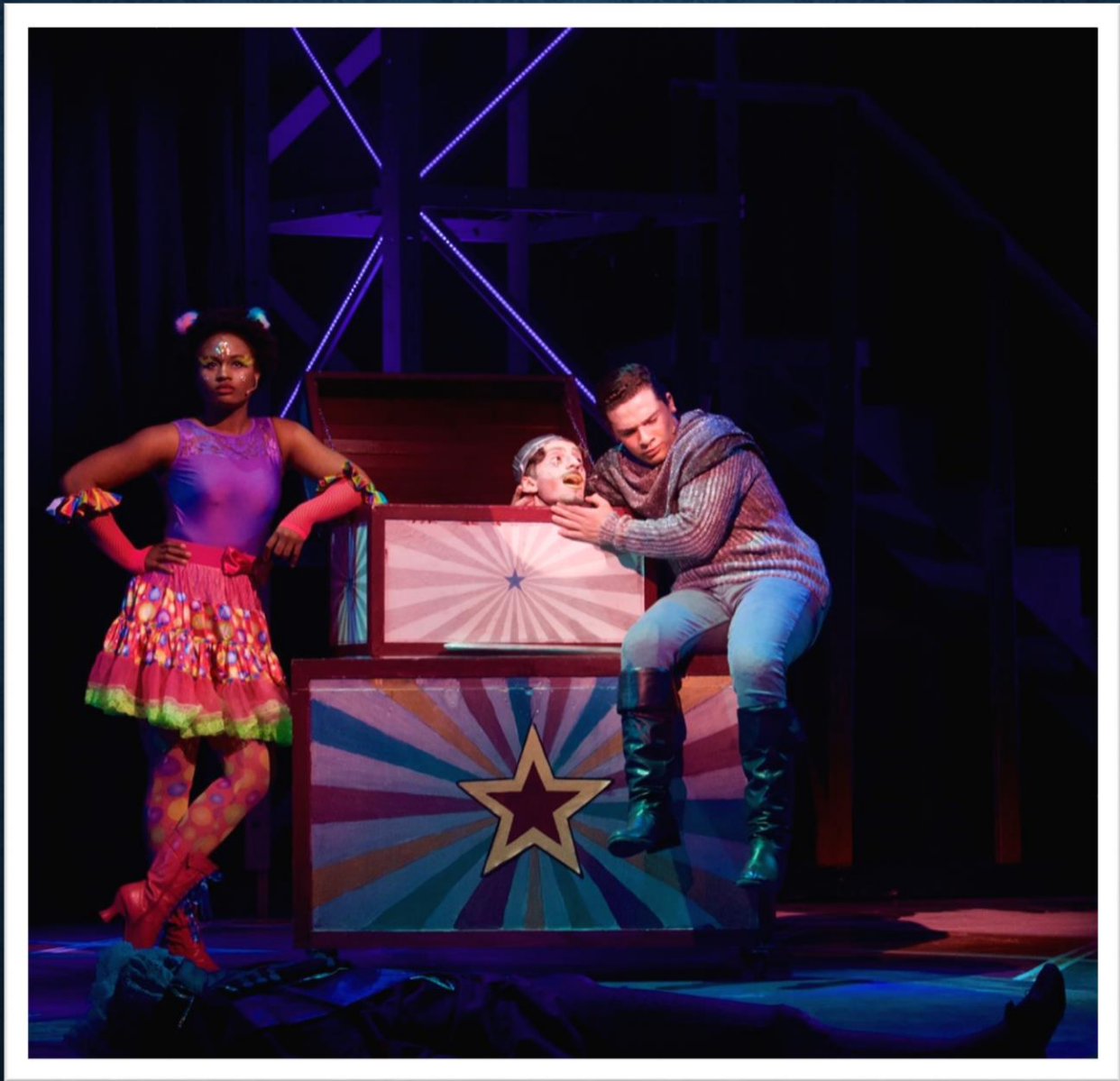
Lighting Design: Eric T. Haugen

Costume Design: Deborah Burrill

Sound Designer: William Neal















# ***THE CHERRY ORCHARD***

Director: Anne Lewis

Scenic Design: Will Neuert

Lighting Design: Eric T. Haugen

Costume Design: Deborah Burrill

Sound Designer: William Neal







***CRAZY FOR  
YOU***

Director: Gina Lamparella

Scenic Design: Steve Teneyck

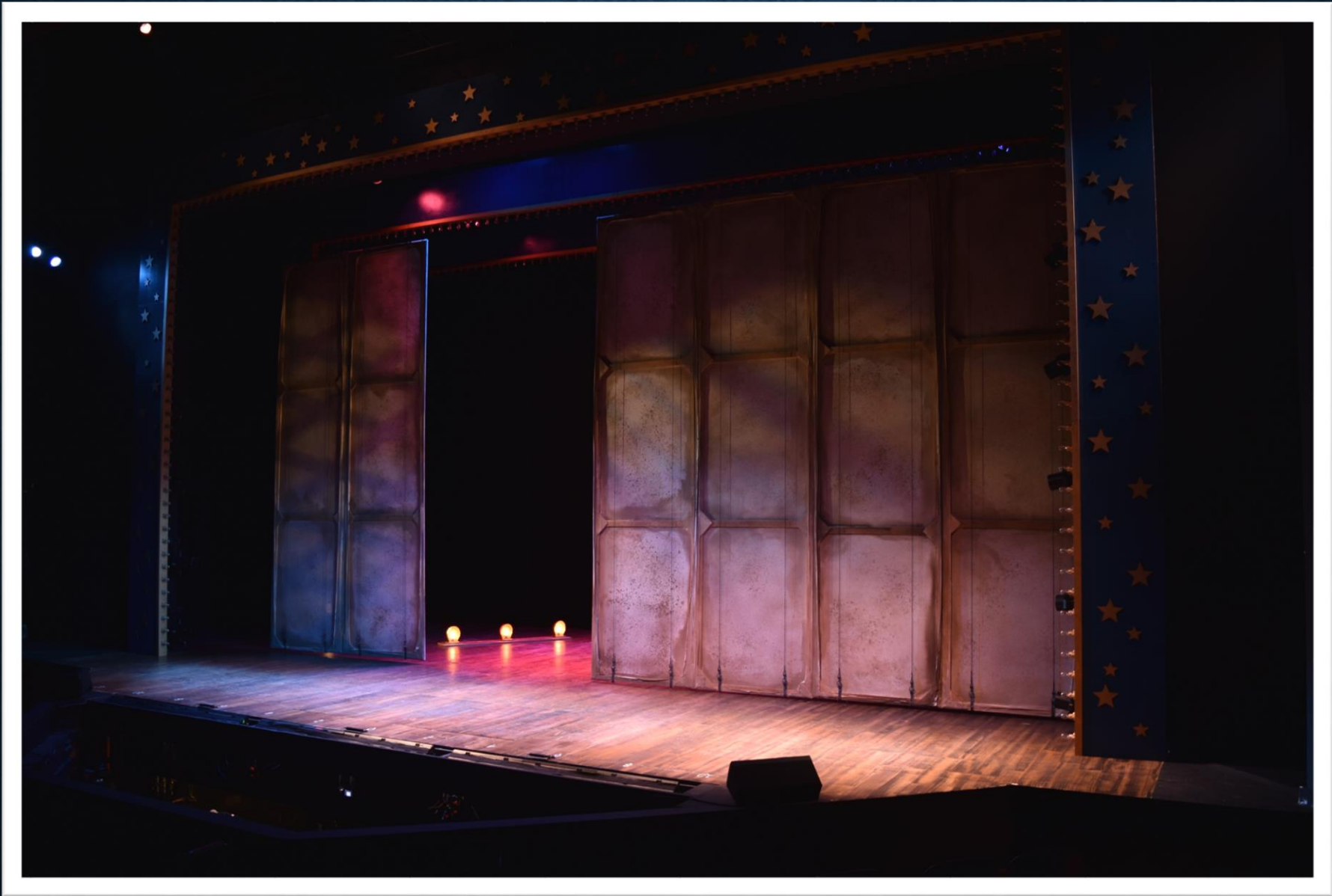
Lighting Design: Eric T. Haugen

Costume Design: Sam Fleming

Sound Designer: Matthew Given













***THE MYSTERY  
OF IRMA VEP –  
A PENNY  
DREADFUL***

Director: Jim Helsing

Scenic Design: Steve Teneyck

Lighting Design: Steve Teneyck

Costume Design: Lisa Zinni

Original Sound Designer: Matthew Given

Sound Designer: William Neal











# ***ANTONY AND CLEOPATRA***

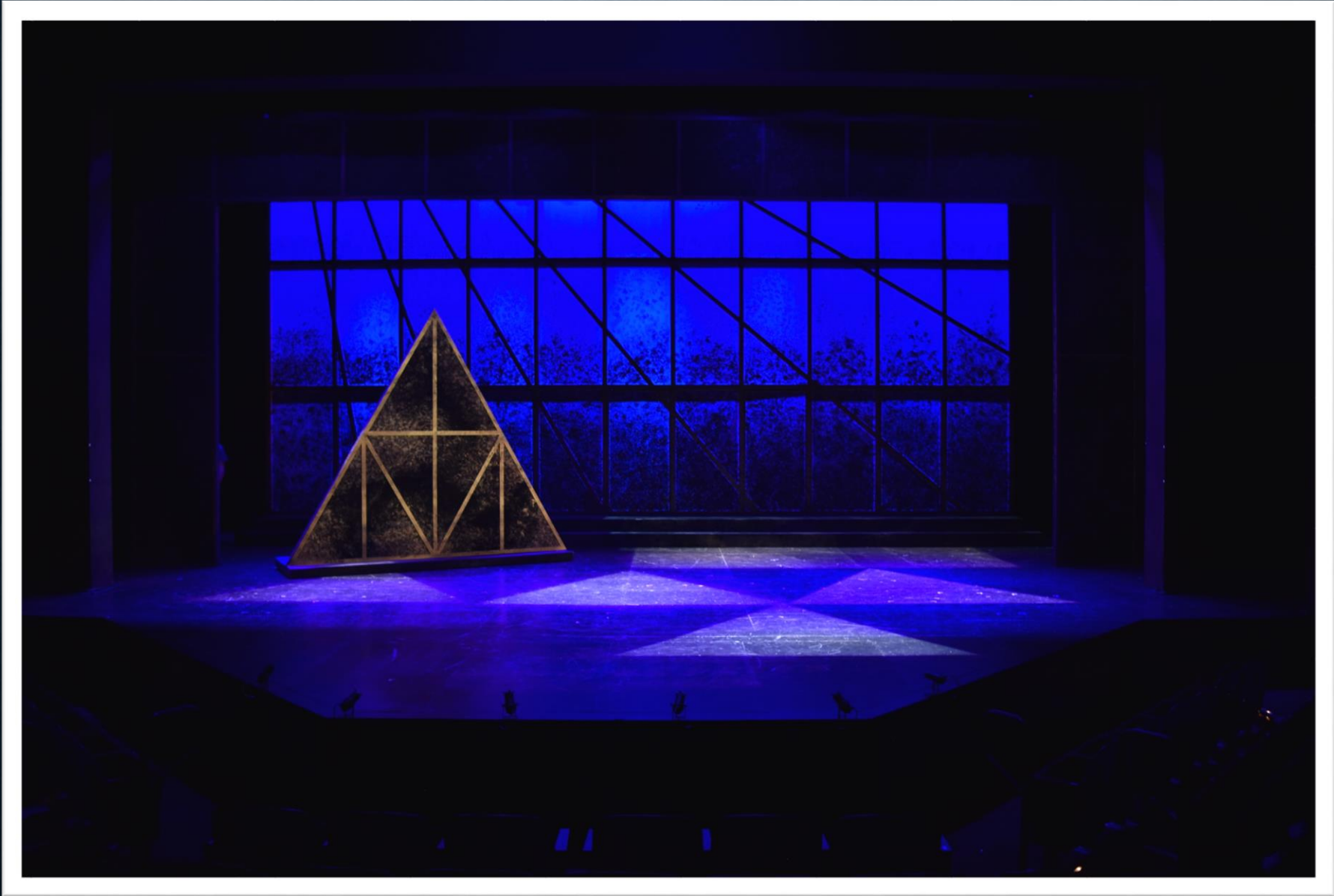
Director: Eleanor Holdridge

Scenic Design: Roman Tatarowicz

Lighting Design: Eric T. Haugen

Costume Design: Sarah Cubbage

Sound Designer: William Neal









# ***PRIVATE LIVES***

Director: Dennis Razze

Scenic Design: Roman Tatarowicz

Lighting Design: Eric T. Haugen

Costume Design: Sarah Cubbage

Sound Designer: William Neal













***THE  
ADVENTURES  
OF ROBIN  
HOOD AND  
MAID MARIAN***

Director: Matt Pfeiffer

Scenic Design: Steve Teneyck

Lighting Design: Alyssandra Docherty

Costume Design: Courtney Irizarry

Sound Designer: William Neal













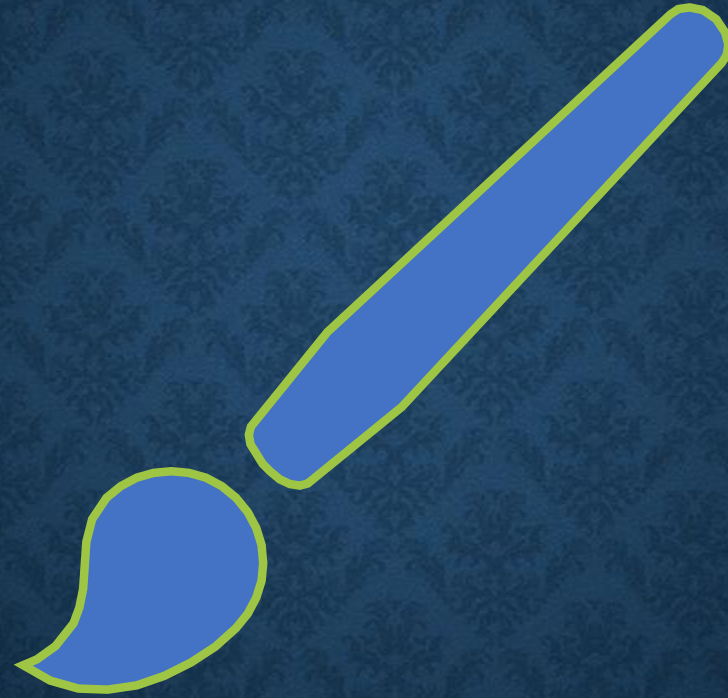
***WILLPOWER  
TOUR 2019:  
MACBETH***

Scenic Design: Steve Teneyck









# **A COLLECTION OF MISCELLANEOUS ARTWORK**













